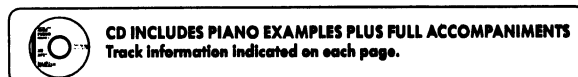


THE LEILA FLETCHER ADULT PIANO COURSE 2

Debra Wanless & Leila Fletcher

For individual and class lessons.



Contents

	Page		Page
	2	Solo Bridal Chorus	29
Solo Key of C Major	2	Solo Carry Me Back to Old Virginia	30
Solo Morning Has Broken	3	Solo The Entertainer	32
Solo I'm Called Little Buttercup	4	Key of D Minor	34
Solo Molly Malone	5	Solo Dark Eyes	35
Key of A Minor	6	Solo Moonlight Sonata	36
Solo Song Of The Volga Boatman	7	Triplets	36
Key of A Minor	8	Solo Waltz Melody	38
Solo Gypsy Dance	8	Solo Narcissus	39
Key of A Minor	10	Solo Old Woman From Wexford	40
Solo March of the Three Kings	11	Solo Home on the Range	41
Key of G Major	12	Solo Danny Boy	42
Solo My Bonnie Lies Over The Ocean	12	Solo Water Ballet	44
Solo Valse Brillante	14	Solo Beautiful Brown Eyes	46
Solo Lullaby	15	Key of G Minor	48
Key of E Minor	16	Solo Whe Johnny Comes Marching Home	49
Solo Black is the Color of My True Love's Hair	17	Solo Moving On	50
Key of E Minor	18	Solo Nora	52
Solo Greensleeves	18	Intervals	52
Time Signature	20	Key of D Major	54
Solo Pop Goes the Weasel	20	Solo Joshua Fit the Battle of Jericho	55
Solo Sailing	21	Solo The Golden Wedding	56
Solo Spinning Song	22	Solo Come Back to Sorrento	58
The Soft Pedal	23	Key of A Major	60
Solo She'll be Comin' Round The Mountain	24	Solo Alouette	61
Solo Hail, Hail! the Gang's All Here!	25	Solo Piping Tim	62
Solo Through The Clouds	26	Solo Canon in D	64
Solo Camptown Races	28		

ISBN 0-921965-72-9

Copyright © 2002 by Mayfair Montgomery Publishing (Division of JAL Holdings Limited) 203-2600 John St, Markham Ontario Canada L3R 3W3
All Rights Reserved including Public Performance for Profit. Printed in Canada International Copyright Secured

RESPECT COPYRIGHT

No portion of this publication may be reproduced in any form or for any means [including photocopying],
or digitized for any reason without written permission from the publisher.

www.leilafletcher.com

THE KEY OF E MINOR

E MINOR HARMONIC

Minor scales have several forms. On page 16 you played E Minor in the Natural form.
E Minor Harmonic Form has raised seventh to add harmonic interest.

Play hands separate first

E MINOR MELODIC

E Minor Melodic Form has the sixth and seventh notes raised ascending but returned descending to create more singable melodies in the music.

Play hands separate first

dotted quarter = 1 1/2 beats

Greensleeves



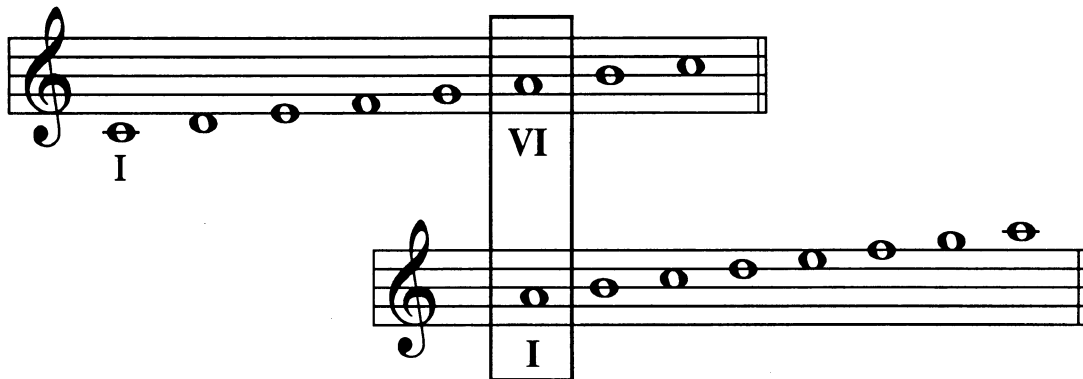
Traditional English Folk Song
Arr. L. Fletcher

Moderato

Con pedale (change with each new measure)

THE KEY OF A MINOR

Each major Scale has a **RELATIVE MINOR** that uses the same key signature
The **Relative Minor** scale begins on the sixth note of the Major.



C Major's Relative Minor is _____ Minor

THE SCALE OF A MINOR

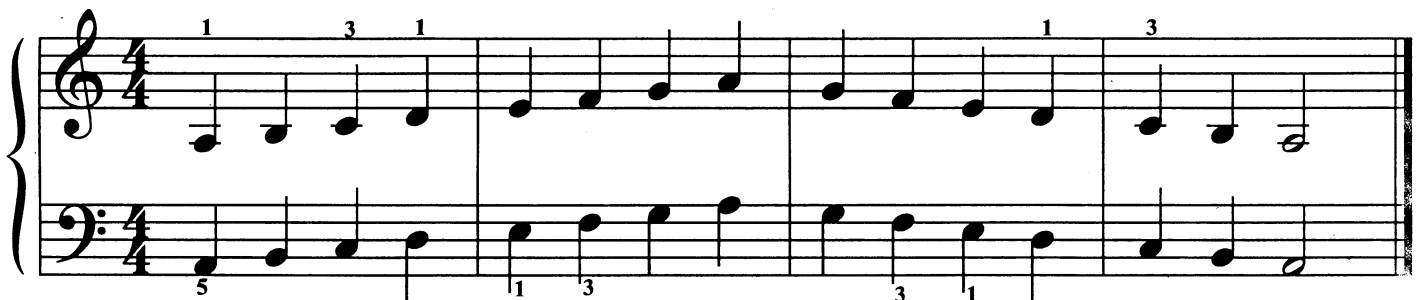
A Minor Scale is the Relative Minor of C Major, they have no \flat 's or \sharp 's

Although A Minor uses the same notes as C Major, the sound is darker and sadder than that of the C Major Scale.

A Minor scale uses the same fingering as C Major.

A MINOR SCALE

Play hands separately first. Remember to make thumbs move freely under the fingers



Andante

A MINOR ETUDE

